

Gray Tree Frog Activity

Facts:

- Gray tree frogs are a nocturnal species of frog that live on trees. At night, they search for insects to eat.
- They can be found throughout the eastern U.S. and southeastern Canada and appear in different colors based on their environment.



Materials:

Crayons/Markers
Scissors
18 in. string
Staples

Instructions

Step 1: Color the frog and the cricket (bonus for creating a colorful background!)

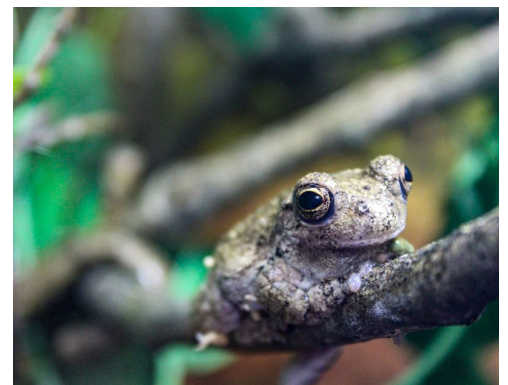
Step 2: Cut the frog cone and cricket strip along the solid lines.

Step 3: Form the frog cone by curling the edges to overlap. Staple the overlap in place.

Step 4: Accordion fold the cricket strip along the dotted lines and staple the layers together to make a flat square.

Step 5: Construct game by threading the string through the tip of the cone and staple it in place on the tip. Staple the other end of the string to the cricket square

Step 6: Help the frog catch the cricket!



--- --- --- --- Fold
————— Cut



