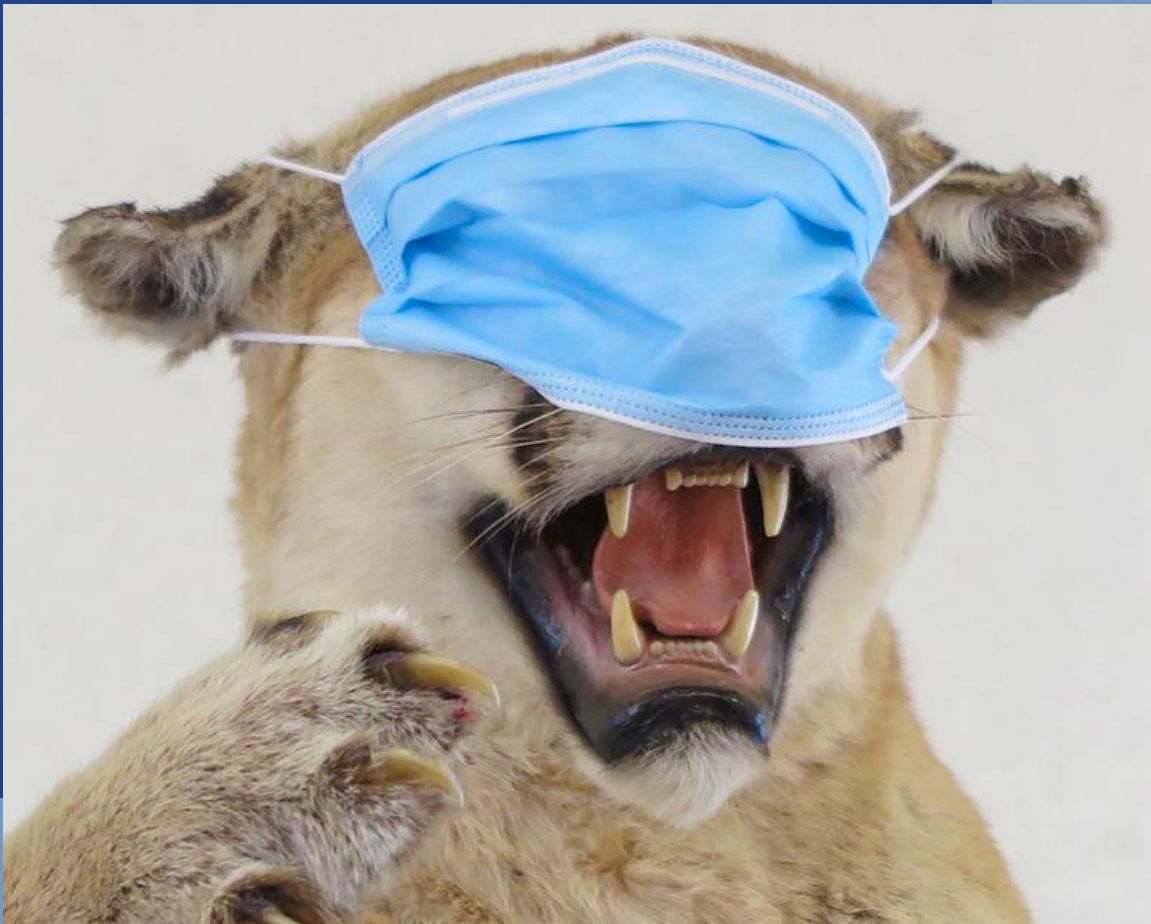


The Proper Way to Wear a Mask

By your *taxidermied friends at the EcoTarium

*No live animals were involved in this project.
We asked, but it was a hard pass.



Positioning is key. Notice how little this mountain lion can see.
This is NOT proper mask positioning.

It's important that the mask fit snugly around your nose and mouth. Don't wear a mask that's too small. **(Ahem, Siegfried).**



A mask that's too big is no good, either. There's a woodpecker under there somewhere...



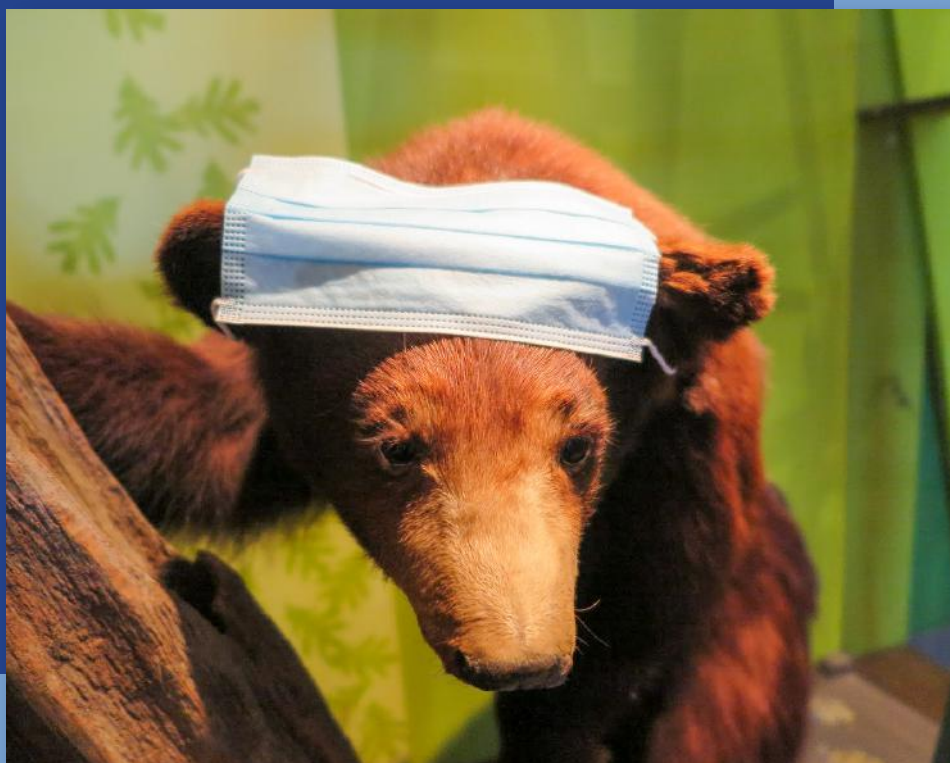
Wearing multiple masks will probably just create a distraction. Opt for one made of layered fabric, instead.



Mask Beard is
so 2019.



So is Mask Cap,
however jaunty.



Who has one thumb, one horn, and is wearing her mask properly? This unicorn.



fits closely around nose and mouth

made of layered fabric